

# TENDER BULLETIN

NO. 37 OF 2024/2025 FY  
REF: 10/3/6/5

06 December 2024



# LIMPOPO

---

**PROVINCIAL GOVERNMENT**  
REPUBLIC OF SOUTH AFRICA

This document is also available on the following website:  
[www.limtreasury.gov.za](http://www.limtreasury.gov.za)

Provincial Supply Chain Management Office

TABLE OF CONTENTS

	Page No.
1. REPORTING FRAUDULENT AND CORRUPT ACTIVITIES .....	03
2. INSTRUCTIONS.....	04
3. BID INVITATIONS .....	05
4. AWARDED BIDS.....	06-10
5. CANCELLATIONS .....	11
6. VALIDITY EXTENSION .....	12
7. GENERAL NOTICES.....	13
ANNEXURE 1: ADDRESS LIST AND CONTACT DETAILS: PROVINCIAL DEPARTMENTS.....	14-15
ANNEXURE 2: ADDRESS LIST AND CONTACT DETAILS: PUBLIC ENTITIES .....	16-17
ANNEXURE 3: ADDRESS LIST AND CONTACT DETAILS: PROVINCIAL TREASURY SCM CLIENT SUPPORT CENTRES .....	18
8. SELF REGISTRATION PROCESS.....	19

**REPORT**

***FRAUDULENT & AND CORRUPT ACTIVITIES IN THE GOVERNMENT PROCUREMENT SYSTEM***

---

***National Anti-Corruption @ 0800 701 701***

***Security and Investigating Services – Limpopo Provincial Treasury @ 015 298 7196***

---

***ALL COMPLAINTS/CONCERNS RELATED TO SCM NON-COMPLIANCE MUST BE REPORTED TO:***

***LIMPOPO PROVINCIAL TREASURY***

***PRIVATE BAG X 9486***

***POLOKWANE***

***0700***

***PROVINCIAL TREASURY, FINANCE HOUSE, 56 – 58 PAUL KRUGER STREET, POLOKWANE***

## **2. INSTRUCTIONS**

1. Bidders are advised to read the entire tender bulletin.
2. Tenders for procurement of supplies, services and disposals are categorized as follows:

### **SUPPLIES**

- Accommodation, leasing of
- Audio visual equipment
- Building material
- Chemicals: Agricultural/Forestry/
- Laboratory/Water Care
- Clothing/Textiles
- Computer equipment
- Computer software
- Electrical equipment
- Electronic equipment
- Furniture
- General
- Medical
- Office equipment: Labour-saving devices
- Perishable provisions
- Stationary/printing
- Steel
- Timber
- Vehicle (all types)
- Workshop equipment

### **SERVICES**

- Building
- Civil
- Electrical
- Functional (including cleaning-, and security services)
- General
- Maintenance of electrical, mechanical
- Equipment and plumbing
- Mechanical
- Professional
- Repair and maintenance of vehicles
- Transport

### **DISPOSALS**

- Clothing and textiles
- Furniture
- General
- Scrap metal
- Vehicles

3. Bid documents are generally available in English only.
4. The address where a bid document is available from and where it must be submitted to may differ.
5. The addresses at which bid documents may be obtained and tenders must be posted appear in Annexure 1.
6. The address list of various Supply Chain Management Advice Centers at which bid documents and tender bulletins may also be obtained, appears in Annexure 3; and
7. The address list of Supply Chain Management satellite offices at which tender bulletins may also be obtained, appear in Annexure 4.

**3. BID INVITATIONS**

BID NO.	DESCRIPTION OF SERVICE OR SUPPLIES	CONTACT DETAILS	BID DOCUMENT PRICE (NON-REFUNDABLE)	DUE AT 11H00	BID DOCUMENTS OBTAINABLE FROM	POST OR DELIVER BIDS TO  (See Annexure 1 & 2)
EDET 305/2024	Appointment for Physical Security Services at various sites (Cluster 4, 8, 9 and 10) of the Limpopo Economic Development Environment and Tourism for a period of Thirty-Six (36) Months  <b>Department of Economic Development, Environment &amp; Tourism</b>	<b>BIDDING PROCESS</b> Ms. Makhubele VM Assistant Director: Supply Chain Management <b>Tel:</b> (015) 293 8852 <b>Cell:</b> 083 649 0624 <b>Email:</b> MakhubeleVM@ledet.gov.za  <b>TECHNICAL ASPECTS</b> Mr. Hlatshwayo SP Security and Facility Management <b>Tel:</b> (015) 293 8642 <b>Cell:</b> 082 809 8864 <b>Email:</b> HlatshwayoSP@ledet.gov.za	N/A	11/02/2025	www.ledet.gov.za and e-tender portal	108
LDPWR-R/20462	Terms of reference for the appointment of professional consultant to develop a level 1 integrated disaster management plan for roads infrastructure across 05 districts within Limpopo province for a period of 12 months.  <b>Department of Public Works, Roads and Infrastructure</b>	<b>BIDDING PROCESS</b> Motsopye N.J <b>Tel:</b> (015) 284 7126 motsopyen@dpw.limpopo.gov.za  <b>TECHNICAL ASPECTS</b> Mashamba T <b>Tel:</b> (015) 284 7927 Mashambat3@dpw.limpopo.gov.za	N/A	20 January 2025	www.dpw.limpopo.gov.za	109

**4. AWARDED BIDS**

**4.1. DEPARTMENT OF CO-OPERATIVE GOVERNANCE, HUMAN SETTLEMENTS & TRADITIONAL AFFAIRS,**

BID NO.	PROJECT DESCRIPTION	NAME OF SUPPLIER AWARDED	VALUE OF CONTRACT AWARDED	TOTAL POINTS SCORED	DATE AWARDED
CoGHSTA B05/ 2024-25 FY	The appointment of service provider for the maintenance and upgrade of the CCTV and access control, metal detectors and x-rays machines at 28 market street, Hensa Towers and 12 <sup>th</sup> -20 <sup>th</sup> Avenue (central building) for the CoGHSTA for a period of thirty-six (36) months.	Mctrend Systems	R 5 719 582.21	99.00	25/ 11 / 2024

**4.2. DEPARTMENT OF ECONOMIC DEVELOPMENT, ENVIRONMENT & TOURISM**

Bid number	Awarded Bidder	Municipality	Project Description	Amount	Date Awarded	Points
EDET 300/2024	Mamadi and Company SA (Pty) Ltd	Makhuduthamaga Local Municipality	Re-advertisement: appointment of a service provider for licensing and development of landfill engineering designs in the four (04) local municipality in Limpopo province for a period of 12 months	R 4 494 288.42	20/11/2024	84
	Mamadi and Company SA (Pty) Ltd	Maruleng Local Municipality		R 4 541 148.57		84
	Mamadi and Company SA (Pty) Ltd	Modimolle-Mokgophong Local Municipality		R 4 547 376.78		84
	Mamadi and Company SA (Pty) Ltd	Thabazimbi Local Municipality		R 4 542 108.57		84

**4.3. LIMPOPO ECONOMIC DEVELOPMENT AGENCY**

BID NO.	BID DESCRIPTION	AWARDED BIDDER	DATE OF AWARD
LEDA/PMU-CONTR/2309	IMPLEMENTATION OF THE CONSTRUCTION, UPGRADING, RENOVATION, REFURBISHMENT, REHABILITATION AND MAINTENANCE OF BUILDING FACILITIES FOR THE LIMPOPO PROVINCIAL DEPARTMENTS ON A FRAMEWORK AGREEMENT FOR A PERIOD OF THREE YEARS (36 MONTHS) AS: <b>CATEGORY A – GENERAL BUILDING CONTRACTORS 7GB or HIGHER</b>	1.3TMDK International 2.Accelerated Growth Construction Projects 3.Bapedi and Associates 4.Baphalaborwa Projects 5.Bicacon 6.Bics Engineering and Supply 7.Big O Engineering 8.Blue Dot G Services	29 October 2024

	<p>9. Bokokotla Motshabo Construction and Projects</p> <p>10. Brooklyn Projects 21</p> <p>11. Brunel Engineering</p> <p>12. Capotex Trading Enterprise</p> <p>13. Chat Connection Enterprise</p> <p>14. Clear Choice Builders</p> <p>15. Dawaila Group</p> <p>16. Ditlou Suppliers &amp; Services</p> <p>17. Down Low Construction and Projects 32</p> <p>18. Drop Dot</p> <p>19. Dzata Property Development</p> <p>20. Enza Construction</p> <p>21. Eternity Star Investments 231</p> <p>22. FM Infrastructure</p> <p>23. Gerson Matamela</p> <p>24. Hillside Trading and Projects</p> <p>25. Impumelelo Consulting Engineers</p> <p>26. KPA Civils</p> <p>27. Kuhlukwakha Construction</p> <p>28. Kumbatia JV Risima Project</p> <p>29. Lamanjolo Investments</p> <p>30. Lazerbane Trading</p> <p>31. Leafy Space</p> <p>32. Lebaka Construction</p> <p>33. Lexy H World</p> <p>34. Lilithalethu Trading 41</p> <p>35. Mafunzwani Construction and General Supply</p> <p>36. Magand Projects</p> <p>37. Mangatlu Trading Enterprise</p> <p>38. Manyawusi Trading Enterprise</p> <p>39. Maswin Trading Enterprise</p> <p>40. Mathelemusa Trading and Projects</p> <p>41. Matiadi Construction</p> <p>42. Mayibuye I Africa Trading</p> <p>43. MC Tee Holdings</p> <p>44. Moago Construction</p> <p>45. Mokibelo Investment Holdings</p> <p>46. Molatebo Construction</p> <p>47. Molook's Civils</p> <p>48. Moribo Wa Afrika Trading</p> <p>49. Mosa Lesareng Trading</p> <p>50. Mpumelelo Business Enterprise</p> <p>51. Mvhevhe Civils</p> <p>52. MY Granny General Trading</p> <p>53. Natha Enterprise</p> <p>54. Ndumasekho Projects</p> <p>55. Oitsegodira General Trading</p> <p>56. Pamodia Projects</p> <p>57. PGN Civils</p> <p>58. Phalalang Business Enterprise</p> <p>59. Pitsi Paula Construction</p> <p>60. Procost And Associates</p> <p>61. Pshika Trading Enterprise</p>	
--	---	--

	<p>62. PWISE Projects</p> <p>63. Ramugra Developments and Projects JV Tshilingano Construction and Cleaning</p> <p>64. Rejcon Engineering</p> <p>65. Rembu Construction</p> <p>66. Ricokona Constructions and Manufacturers Supplies</p> <p>67. Semilson Group</p> <p>68. Sizisa Ukhanyo Trading 200</p> <p>69. Soaring Summits Group</p> <p>70. Somandla Trading 14</p> <p>71. Sophy And Jack Shop Training and Civil Construction</p> <p>72. SP Lenong Civil Groups 8</p> <p>73. Stankay Trading Enterprise</p> <p>74. Tac Group JV Ultrasolo</p> <p>75. TCT Civil and Construction</p> <p>76. Technomobile</p> <p>77. Tefla Group</p> <p>78. The Curve Behind Trading 191</p> <p>79. Thenga Holdings</p> <p>80. Thobile.M Building Construction</p> <p>81. Tim Mas Holdings Group</p> <p>82. Toro Ya Bakwena Civil Engineering JV Iconnect Trading Enterprise</p> <p>83. Tshepho Legodi Trading</p> <p>84. Tubatse Products</p> <p>85. Urban Plant Consult</p> <p>86. Uyapo Engineering Projects</p> <p>87. Vidian Construction and Projects</p> <p>88. Wilsand Trading and Projects</p> <p>89. Xiluva Xa Mina Projects</p> <p>90. Xiluveweni Projects</p> <p>91. Zorha Khan Developers</p>	
<p>IMPLEMENTATION OF THE CONSTRUCTION, UPGRADING, RENOVATION, REFURBISHMENT, REHABILITATION AND MAINTENANCE OF BUILDING FACILITIES FOR THE LIMPOPO PROVINCIAL DEPARTMENTS ON A FRAMEWORK AGREEMENT FOR A PERIOD OF THREE YEARS (36 MONTHS) AS: <b>CATEGORY B – GENERAL BUILDING CONTRACTORS 5 – 6 GB</b></p>	<p>1. Alframer Business Enterprise</p> <p>2. Balo Holdings</p> <p>3. Bateline Investments</p> <p>4. Batsetla Construction JV Leson Trading</p> <p>5. BBC Projects and Fencing</p> <p>6. Bo-Mamohlala Projects</p> <p>7. BPM2 Consulting Engineers</p> <p>8. Casnan Civils</p> <p>9. Chauke Business Enterprise</p> <p>10. Devet Management</p> <p>11. Gasela MST Projects</p> <p>12. Green Belt Holdings 92</p> <p>13. Growing Path Trading</p> <p>14. La Mia Bella</p> <p>15. Mabistin Multi Supplier</p> <p>16. Machaba Tau Construction</p> <p>17. Malebana A Mmakutu Business Enterprise</p> <p>18. Masailor Construction</p> <p>19. Matshelane Trading</p>	<p>08 November 2024</p>



		<ul style="list-style-type: none"> <li>20. Mexcon Civils</li> <li>21. MNT Consulting</li> <li>22. Mokgethwa Projects 2013</li> <li>23. Mokgolokwane Holdings</li> <li>24. Monala General Trade</li> <li>25. Moneeb Holdings</li> <li>26. Moreje Construction</li> <li>27. Motho Waka Trading</li> <li>28. MVE Consulting Engineers</li> <li>29. Mveledziso Traidng and Projects</li> <li>30. Nana Investment and Security</li> <li>31. Nkomazi Business Network</li> <li>32. Nkuriso Development Projects</li> <li>33. Pitsi Yamabala Business Enterprise</li> <li>34. Ramashu Supply and Services</li> <li>35. Ravha Trading Enterprise</li> <li>36. Re bone Business Enterprise</li> <li>37. Reabeleng Group</li> <li>38. Red Stain-16 Trading</li> <li>39. Ronbus Trading and Projects</li> <li>40. Sebakwa Trading and Projects</li> <li>41. Sopky Trading</li> <li>42. Stanley Mautle Construction</li> <li>43. Tarcron Projects</li> <li>44. Tlhangwe</li> <li>45. Tloukgolo Pioneers</li> <li>46. TMZ Solutions</li> <li>47. Tshwane Engineering and Hydraulic Supplies JV Jovi Holdings</li> <li>48. Vhuso General Trading</li> <li>49. Wagasha Construction and Food Services</li> <li>50. Xalamuka Built Environment</li> </ul>	
	<p>IMPLEMENTATION OF THE CONSTRUCTION, UPGRADING, RENOVATION, REFURBISHMENT, REHABILITATION AND MAINTENANCE OF BUILDING FACILITIES FOR THE LIMPOPO PROVINCIAL DEPARTMENTS ON A FRAMEWORK AGREEMENT FOR A PERIOD OF THREE YEARS (36 MONTHS) AS: <b>CATEGORY C – GENERAL BUILDING CONTRACTORS 3 – 4 GB</b></p>	<ul style="list-style-type: none"> <li>1. Anolog</li> <li>2. BCP JV Xisebenene</li> <li>3. Blue Rocks Civil Services CC</li> <li>4. Emadwaleni Holdings (Pty) Ltd</li> <li>5. Enaji Tech Centre (Pty) Ltd</li> <li>6. FCM Projects (Pty) Ltd</li> <li>7. Fluid Con Trading &amp; Project</li> <li>8. Forty Infrastructure Group</li> <li>9. K and L Designs and Construction</li> <li>10. Kindom Solutions</li> <li>11. Magonso GT</li> <li>12. Mahlwalerwa Business Enterprise</li> <li>13. Makhaokane General Construction</li> <li>14. Munakisi Projects</li> <li>15. Popz-Iwazi Trading</li> <li>16. Sodluli Trading and Projects Pty</li> <li>17. Sumarc Projects Solutions CC</li> <li>18. Tala 3D (Pty) Ltd</li> <li>19. Tincol Group (Pty) Ltd</li> <li>20. Welcony Investments Pty</li> <li>21. Zwashu Business Enterprise</li> </ul>	29 October 2024

4.4 DEPARTMENT OF EDUCATION

NO.	BID NO. (LDE/ B03/2 024/2 5)	DESCRIPTION	ADVERT PERIOD		SUPPLIER(S)	PRICE(S)			TOTAL POINTS ATTAINED	DATE OF AWARD
			DATE OF ADVERT	CLOSING DATE		YR 1	YR2	YR3		
1.	LDE/ B03/2 024/2 5	Appointment of service provider to provide Learner Teacher Support Material (LTSM) warehouse management and distribution of school textbook for the Limpopo Department of Education for a period of three (03) years.	20/09/ 2024	04/10 /2024	MAK DISTRIBUT ORS	R5 .94	R6.00	R6.05	89.89	08/11 /2024

5. CANCELLATIONS

DEPARTMENT OF SOCIAL DEVELOPMENT

TENDER BULLETIN NO.	BID NO	PROJECT DESCRIPTION	DATE ADVERTISED	DATE CLOSED	REASONS FOR CANCELLATION
19 OF 2024/5 FY	DSDP 23/23	Provision of clinical services to the employee of the department of Social Development for a period of thirty six months	08/098/2024	29/08/2024	Validity period lapsed

**EXTENSION OF VALIDITY PERIOD**

**LIMPOPO PROVINCIAL TREASURY**

**LPT 004/2024: FORMULATION OF A PANEL FOR FORENSIC INVESTIGATION FOR A PERIOD OF 36 MONTHS.**

The bid was advertised/invited on the Limpopo Provincial Treasury Website and Provincial Tender Bulletin No. 17 of 2024/2025 and was published on the 26 July 2024 has not been concluded, hence the extension of validity period up to the 29<sup>th</sup> of March 2025.

Bid number		Description of Service	Reason for Extension
1	LPT 004/2024	Panel for Forensic Services	Still in the process of evaluation.

Objections for extension of validity period should be submitted to Mr. Maphanga TH at [maphangath@treasury.limpopo.gov.za](mailto:maphangath@treasury.limpopo.gov.za) by the 17<sup>th</sup> of December 2024.

**8. GENERAL NOTICE**

**LIMPOPO (SCM CLIENT SUPPORT CENTERS) CSD CALL CENTRE LINES FOR SUPPLIERS**

DISTRICT	CALL NUMBER	CENTRE	OFFICIAL RESPONSIBLE	TIME
Capricorn	015 291 8521		Ms. Rasilingwani M	07H30 TO 16H30
Mopani	015 812 0256		Mr. Molele MN	07H30 TO 16H30
Sekhukhune	013 265 1071		Mr. Sehale MS	07H30 TO 16H30
Vhembe	015 962 0014		Mrs. Manena A	07H30 TO 16H30
Waterberg	014 717 1376		Ms. Moloi R	07H30 TO 16H30

**ANNEXURE 1: ADDRESS LIST AND CONTACT DETAILS: LIMPOPO PROVINCIAL DEPARTMENTS**

UNIQUE REF. NO.	BID DOCUMENT REFERENCE	CONTACT DETAILS	DOCUMENTS SOLD AT:	DOCUMENTS DEPOSITED AT
100	DSDP	Tel: 015 293 6000 Fax: 015 293 6211 Website: <a href="http://www.limpopo.gov.za">www.limpopo.gov.za</a>	<b>Department of Social Development</b> , Office No. 57 Ground Floor, 21 Biccard Street POLOKWANE	Deposited in the box located at the Department of Social Development, 21 Biccard Street Polokwane
101	LPT	Tel: 015 298 7000 Fax: 015 295 7010 Website: <a href="http://www.limpopo.gov.za">www.limpopo.gov.za</a>	<b>Provincial Treasury</b> 46 Hans Van Rensburg Street, POLOKWANE and all Provincial Treasury Client Support Centres	Deposited in the bid box located outside a guard house at Ismini Towers, 46 Hans Van Rensburg Street, Polokwane
101A	TC/LP	Tel: 015 291 8400 Fax: 015 295 3310 Website: <a href="http://www.limpopo.gov.za">www.limpopo.gov.za</a>	<b>Provincial Treasury</b> 56 – 58 Paul Kruger Street, POLOKWANE and all Provincial Treasury Client Support Centres	Deposited in the bid box located at the main entrance, Finance House Building, 56-58 Paul Kruger Street, Polokwane
102	PRDP	Tel: 015 287 6000 Fax: 015 295 3840 Website: <a href="http://www.limpopo.gov.za">www.limpopo.gov.za</a>	<b>Office of the Premier</b> , 40 Hans van Rensburg Street, POLOKWANE and all SCM Client Support Centres	Deposited in the bid box located at Mowaneng Building, 40 Hans van Rensburg Street, Polokwane
103	HEDP	Tel: 015 293 6000 Fax: 015 293 6211 Website: <a href="http://www.limpopo.gov.za">www.limpopo.gov.za</a>	<b>Department of Health</b> , Office No. D3 Ground Floor, Old Capricorn Building, 18 College Street, POLOKWANE and all Provincial Treasury Client Support Centres	Deposited in the box located at Department of Health and Social Development, 18 College Street, Polokwane
104	LPEDT	Tel: 015 290 7600/1 Fax: 015 297 4494 Website: <a href="http://www.limpopo.gov.za">www.limpopo.gov.za</a>	<b>Department of Education</b> , Corner 113 Biccard and 24 Excelsior Streets, POLOKWANE and all Provincial Treasury Client Support Centres	Deposited in the bid box located at the main entrance of corner 113 Biccard Street and Excelsior Street, Polokwane
105	PUDP	Tel: 015 295 1000 Fax: 015 295 1163 Website: <a href="http://www.limpopo.gov.za">www.limpopo.gov.za</a>	<b>Department of Transport and Community Safety</b> , 40 Paul Kruger Street, POLOKWANE and all Provincial Treasury Client Support Centres	Deposited in the bid box located at 1 <sup>st</sup> Floor, Paul Kruger Wing, 40 Paul Kruger Street, Polokwane
106	COGHSTA	Tel: 015 294 2000 Fax: 015 295 4190 Website: <a href="http://www.limpopo.gov.za">www.limpopo.gov.za</a>	<b>Department of Co-Operative Governance, Human Settlements &amp; Traditional Affairs</b> , 28 Market Street, Office No. G 74, Ground Floor, Polokwane.	Deposited in the bid box located at Hensa Towers, Cnr of Rabe and Landdros Mare Streets, Polokwane
107	DSAC	Tel: 015 284 4000 Fax: 015 284 4514 Website: <a href="http://www.limpopo.gov.za">www.limpopo.gov.za</a>	<b>Department of Sport, Arts and Culture</b> Olympic Towers, Corner Rabe and Biccard Street, POLOKWANE and all Provincial Treasury Client Support Centres	Deposited in the bid box located at the main entrance of Olympic Towers, Corner 21 Rabe and Biccard Street, Polokwane

108	LEDET	Tel: 015 293 8300 Fax: 015 293 8319 Website: <a href="http://www.limpopo.gov.za">www.limpopo.gov.za</a>	<b>Department of Economic Development, Environment &amp; Tourism</b> , 90 Bok Street, POLOKWANE and all SCM Client Support Centres	Deposited in the bid box located at the main entrance of Evridiki Towers, 19 Biccard Street, Polokwane
109	LDPW & WODP	Tel: 015 284 7000 Fax: 015 284 7031 Website: <a href="http://www.limpopo.gov.za">www.limpopo.gov.za</a>	<b>Department of Public Works, Roads and Infrastructure</b> ; Towers, 43 Church Street, POLOKWANE and all Provincial Treasury Client Support Centres	Deposited in the bid box located at Corner Blaawberg and River Street Ladanna Polokwane 0699 Private Bag X9490 Polokwane 0700
110	ACDP	Tel: 015 294 3000/30/60/90/20 Fax: 015 294 4506 Website: <a href="http://www.limpopo.gov.za">www.limpopo.gov.za</a>	<b>Department of Agriculture</b> , Temo Towers, 69 Biccard Street, POLOKWANE and all Provincial Treasury Client Support Centres	Deposited in the bid box located at the main entrance of AgriVillage, 69 Biccard Street, Polokwane

**ANNEXURE 2: ADDRESS LIST AND CONTACT DETAILS: LIMPOPO PUBLIC ENTITIES**

UNIQUE REF. NO.	BID DOCUMENT REFERENCE	CONTACT DETAILS	DOCUMENTS SOLD AT:	DOCUMENTS DEPOSITED AT
111	RFB: LIMP	Tel: 015 293 3621 Fax: 015 293 3660 Website: <a href="http://www.golimpopo.com">www.golimpopo.com</a>	<b>State Information Technology Agency (SITA)</b> Limpopo Office, Moolman Building, 27 Market Street, POLOKWANE, 0699	The bid box is located at the Main Entrance of the Moolman Building, 27 Market Street, Polokwane
112	LTA	Tel: 015 293 3600 Fax: 015 293 3655 Website: <a href="http://www.golimpopo.com">www.golimpopo.com</a>	<b>Limpopo Tourism Agency</b> , ERF 92/688, Portion 2 Southern Gateway, Ext 4, N1 Main Road, Polokwane 0699	The bid box is located in the offices ERF 92/688, Portion 2 Southern Gateway, Ext 4, N1 Main Road, Polokwane 0699
113	LGB	Tel: 015 295 5581 Fax: 015 295 3566 Website: <a href="http://www.lgb.org">www.lgb.org</a>	<b>Limpopo Gambling Board</b> , 08 Hans van Rensburg Street, POLOKWANE, 0699	The bid box is located at the main entrance, 8 Hans van Rensburg Street, Polokwane, 0699
114	LEDA	Tel: 015 633 4700 Fax: 015 633 4854 Website: <a href="http://www.leda.co.za">www.leda.co.za</a>	<b>Limpopo Economic Development Agency</b> Enterprise Development Finance, Main Road Lebowakgomo	The bid box is located at the main entrance, Enterprise Development Finance, Main Road Lebowakgomo
115	RAL	Tel: 015 284 4600 Fax: 015 284 4701 Website: <a href="http://www.ral.co.za">www.ral.co.za</a>	<b>Road Agency Limpopo (RAL)</b> , RAL Towers, 26 Rabe Street, POLOKWANE, 0700	The bid box located in the entrance foyer (ground floor) of RAL Towers, at 26 Rabe Street, Polokwane
116	GAAL	Tel: 015 288 0122 Fax: 015 288 0346 Website: <a href="http://www.gaal.co.za">www.gaal.co.za</a>	<b>Gateway Airports Authority Limited</b> , N1 Road to Louis Trichardt, Army Base, POLOKWANE International Airport, Polokwane, 0700	The bid box is located in the main entrance, the ground floor of the administration building, Polokwane International Airport, Army Base
117	VIVET	Tel: 015 963 3156 Fax: 015 963 3154 Website: <a href="http://www.vhembecollege.edu.za">www.vhembecollege.edu.za</a>	<b>Vhembe TVET College</b> , Central Office, Site No 203 SIBASA 0970	<b>Vhembe TVET College</b> , Central Office, Site No 203 SIBASA 0970
118	WTVET	Tel: 015 491 8581/8602 Fax: 015 491 8579 Website: <a href="http://www.procurement@waterbergcollege.co.za">www.procurement@waterbergcollege.co.za</a>	<b>Waterberg FET College</b> , Central Office, 36 Hooqe Street Street, Mokopane, 0600	<b>Waterberg FET College</b> , Central Office, 36 Hooqe Street Street, Mokopane, Private Bag x 2449, Mokopane 0600
119	GNT	Tel. 015 291 2641 Fax. 015 291 2648	No. 130a Marshall Street, Polokwane.0700	Great North Transport No. 130 Marshall Street, Polokwane.0700
120	MT	Tel. 015 2907715/7772	<b>Mvula Trust</b> 25 Rhodesdrift Street, Rhodesdrift Office Park, Bendor Ext 30, Polokwane	<b>Mvula Trust</b> 25 Rhodesdrift Street, Rhodesdrift Office Park, Bendor Ext 30, Polokwane
121	CCTVET	Tel.015 230 1800 Fax. 015 291 2767	Capricorn College for TVET 16 Market Street, Polokwane	Private Bag X9674 Polokwane0700
122	IDT	Tel: 015 295 0000 Fax: 015 295 6559	<b>Independent Development Trust</b>	<b>Independent Development Trust</b>

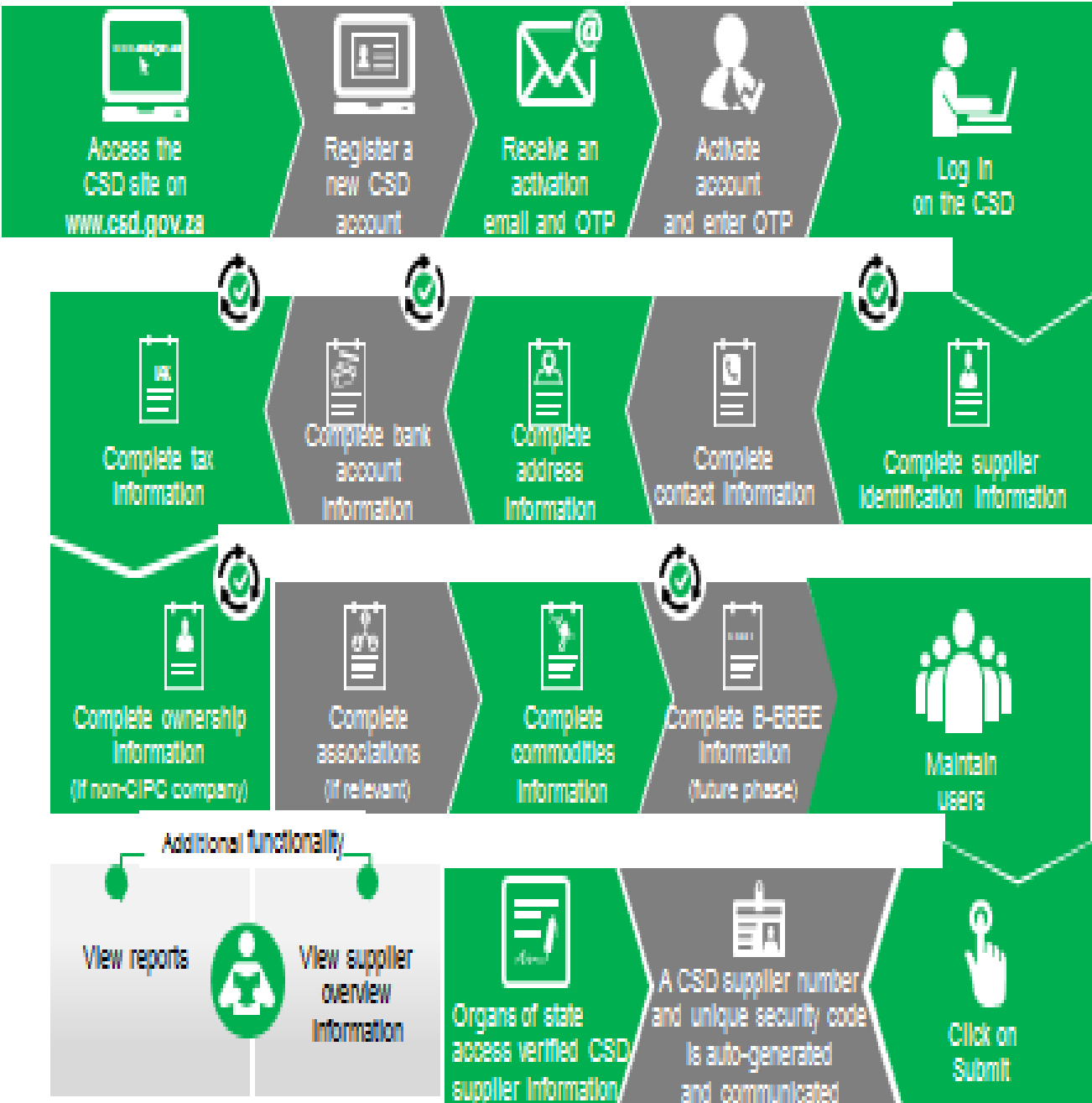


			22 Hans van Rensburg Street, Polokwane, 0700	P.O.Box 55386 Polokwane 0700
123	DBSA	scmqueries@dbsa.org	<b>Development Bank of Southern Africa</b> Welcome Centre 1258 Lever Road Midrand	<b>Development Bank of Southern Africa</b> Welcome Centre 1258 Lever Road Midrand
124	MMSEZ	www.mmsez.co.za	<b>Makhado Musina Special Economic Zone</b> 93 Biccard Street, Polokwane, 0699	<b>Makhado Musina Special Economic Zone</b> 93 Biccard Street, Polokwane, 0699

**ANNEXURE 3: ADDRESS LIST AND CONTACT DETAILS: PROVINCIAL TREASURY SCM CLIENT SUPPORT CENTRES**  
(CSD registration, assistance with SBD forms completion, and copies of the Provincial Tender Bulletin can be accessed from the following Limpopo Provincial Treasury District Centers):

<b>PROVINCIAL TREASURY SUPPLY CHAIN MANAGEMENT CLIENT SUPPORT CENTRES</b>	
<p><b>HEAD OFFICE</b></p> <p>SCM CLIENT SUPPORT 56 – 58 Paul Kruger Street POLOKWANE Private Bag x9494 <b>POLOKWANE, 0700</b> <b>Tel No. (015) 291 8400</b></p> <p>Contact: <b>Ms. L. D. Msimeki @ Tel: 015 291 8755</b></p>	<p><b>Capricorn SCM Client Support Centre</b></p> <p>Limpopo Provincial Treasury 56-58 Paul Kruger Street Private Bag x9494 <b>POLOKWANE, 0700</b> <b>Tel No. (015) 291 8400</b></p> <p>Contact Person: <b>Ms. Rasilingwani M</b></p>
<p><b>Vhembe SCM Client Support Centre</b></p> <p>Limpopo Provincial Treasury Government Building Complex BLOCK E GROUND FLOOR <b>THOHOYANDOU, VENDA</b> Tel: (015) 962 1752 Fax: (015) 962 1282</p> <p>Contact Person: <b>Ms. A Manena</b></p>	<p><b>Mopani SCM Client Support Centre</b></p> <p>Limpopo Provincial Treasury Private Bag X 1973 <b>GIYANI, 0826</b> Tel: (015) 812 0149 Fax: 086 219 7905</p> <p>Contact Person: <b>Mr. M.N. Molele</b></p>
<p><b>Waterberg SCM Client Support Centre</b></p> <p>Limpopo Provincial Treasury 98 Nelson Mandela Street Decimale Building <b>MODIMOLLE</b> Tel: (014) 717 5837 Fax: (014) 717 5670</p> <p>Contact Person: <b>Ms. R Moloi</b></p>	<p><b>Sekhukhune SCM Client Support Centre</b></p> <p>Limpopo Provincial Treasury Lefa Centre, Schoonoord Road <b>JANE FURSE</b> Tel: (013) 265 1344 Fax: (013) 265 1354</p> <p>Contact Person: <b>Mr. M. S. Sehale</b></p>

# Supplier Self-Registration Process



Auto verification of supplier information with SARS, GIPC etc